

# How data management should work for you

For speed, ease of use and integrated resource-rich solutions, AxiomSL could be the answer to your data management prayers. Donald Mumma, managing director, Axiom Software reports

**D**ata management is the most significant and perhaps the most difficult cost and time element facing today's information technology departments. The objective is to get the right information, to the right people, at the right time. This process will be different for each organisation, and is constantly changing, both from the top down and from the bottom up. While information technology has improved the efficiency of business, there are very few simple software tools available to dramatically and broadly improve the efficiency of data management in risk, regulatory reporting and compliance areas.

## A good data management infrastructure, ensures that compliance is achieved with a competitive advantage because of faster speed-to-market and lower costs

With each new data management requirement, the industry usually responds with a stand-alone tool to address it. The problem with this approach is that the tools then need to be integrated into the rest of the systems and business environment, usually without any business context.

Axiom Software Laboratories' (AxiomSL) data management suite of three products, IntegrationCenter™, FinETL™ and Dynamic Data Warehouse™ integrates and executes a wide range of best-of-breed functions. The advantage over stand-alone tools is that they are naturally integrated with each other and interface non-intrusively with other upstream and downstream systems.

Since its inception in 1989, AxiomSL has been involved in some of the most complex and diverse data integration and management challenges, many in a very resource-thin

context. As a result, AxiomSL has developed a suite of flexible, modular data management applications and tools that have been proven to reduce the time, frustration and resource requirements for a wide range of data management scenarios, including:

- Interfacing, capturing, cataloguing and storing market data time series from multiple sources for controls on pricing and risk measurement.
- Reference data management, including security masters and customer information consolidation, quality, for pricing and portfolio construction.
- Analysing credit and operational risk events and severity for Basel II compliance and economic capital measurement inputs (PDs, LGDs, EAD, loss events, etc).
- Organising transactional data sources into portfolio hierarchies for transparency and audit trails related to financial and regulatory reporting, compliance monitoring and risk management.
- Data integrity/quality monitoring, reporting and cleansing for multiple business applications and reporting.

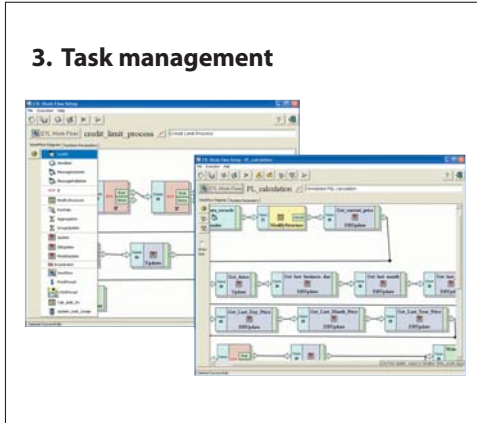
Sarbanes-Oxley, new FASB/IAS rules and Basel II have created new data management issues. A good data management infrastructure, ensures that compliance is achieved with a competitive advantage because of faster speed-to-market and lower costs.

AxiomSL has been helping clients improve their data management processes in business intelligence areas, while lowering their costs with an ever-increasing array of functions to satisfy new and changing requirements, for example:

- For more than 10 years, a major European Global Bank has been using AxiomSL products for its global regulatory reporting. Each country, having its specific regulatory requirements, is now using Visual Business



### 3. Task management

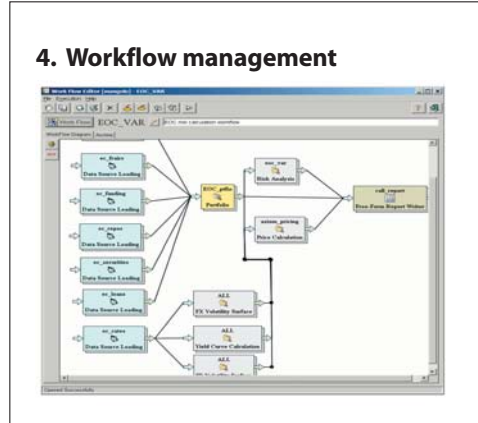


teristics; the measures to be aggregated; the drill-down structure and any additional calculations needed on the aggregated totals.

This stage includes more complex tasks that require seamless integration of the source and results data to another application. Figure 3 shows examples of how AxiomSL's FinETL, a graphical tool for data management and analytical process design, performs a P&L calculation and a rules-based analysis of financial statements.

In the second example, using the results of the analysis, FinETL then performs a risk limit measurement based on user-defined rules, which are then passed to a limit

### 4. Workflow management



tionCenter's report-writer has both tabular ad-hoc style reporting and free-form reports used for designing specific reports with graphics for senior management, electronic submission and results validation.

Wrapped around the four steps is a graphical workflow process management tool (figure 4) that sequences, schedules and monitors these processes to control how a 'job' is completed. IntegrationCenter includes these functions to improve operating efficiencies and to provide control, process transparency and easy audit trails.

Why clients have chosen Axiom SL's products for their data management.

## The data management functions of IntegrationCenter, FinETL and Dynamic Data Warehouse are complete and production-proven

management system. IntegrationCenter automatically stores the results in the Dynamic Data Warehouse for transparent analysis. Alternatively, results can also be 'published' to an external storage environment.

**Step four:** includes analysis, report generation and distribution. It involves results visualisation together with drill-down analysis down to the source level. IntegrationCenter integrates its native report writing capability for easy use by business or IT professionals and links it to the Dynamic Data Warehouse. It can also interface with external reporting tools. Integra-

- The data management functions of IntegrationCenter, FinETL and Dynamic Data Warehouse are complete and production-proven in complex analytical and decision support applications for sophisticated organisations.
- There is extraordinary value in having tools designed to work with each other seamlessly. Stand-alone tools that do not understand the existence of other upstream or downstream data management functions require large integration investments in money, people and time to make each part work together and to accommodate changes.
- AxiomSL's products a) embrace an open technology and approach that fits your infrastructure and protects business application investments b) offer lower lifecycle costs of data integration and management, c) bring IT and business professionals together to collaborate in the data management solution of a business problem, and d) provide a more controlled, transparent and auditable end-to-end management of source data into application results. ■

**Contact**

For more information about our products, visit our website at: [www.axiomsl.com](http://www.axiomsl.com) or you can email us at: [E:sales@axiomsl.com](mailto:E:sales@axiomsl.com)